

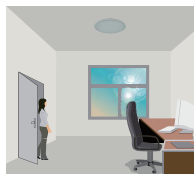
3.2-1 Stand-by Period: This is the time period you would like to keep at the low light output level before it is completely switched off in the long absence of people.

	1	2	
●:ON	●	●	0S
○:OFF	○	○	1MIN
	●	○	10MIN
	○	○	+∞

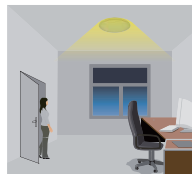
3.2-3 Hold Time: Hold-time means the time period you would like to keep the lamp on 100% after the person has left the detection area.

	5	6	
●:ON	●	●	30S
○:OFF	○	○	60S
	●	○	180S
	○	○	10MIN

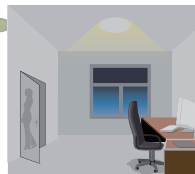
3.2-5 Pic as below Use **HYTRONIK**® Microwave module.



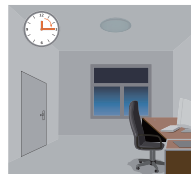
With sufficient natural light, the light does not switch on when presence detected.



with insufficient natural light, the sensor switches on the light when motion detected.



people left, light dims to stand-by level after the hold-time.



Light switch off automatically after the stand-by time elapsed.

3.3 This installation step is apply to DCCT/Microwave function.

4. Fixing the lamp

After fixing the bracket in appropriate place, please put the excessive wire into the groove and then combine the lamp and the bracket together.



--- Open installation

5. Fix the mounting bracket

5.1 Cement ceiling---make sure the bracket is parallel to the cable. According to the length of cable, choose appropriate place to drill two $\phi 5\text{mm}$ holes A and B, knock 2 white expansion tubes into the holes.

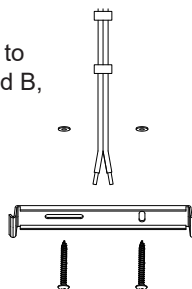
5.2 Turn 2pcs of $\phi 4\text{mm} \times 30\text{mm}$ screws into the white expansion tubes through the bracket hole to fix the bracket on the ceiling.

5.3 For wooden or other non-cement ceiling- use 2 $\phi 4\text{mm} \times 15\text{mm}$ screws directly to mount the bracket on the ceiling.

5.4 Wiring the lamp as point 2.

5.5 Fixing the lamp

Please refer to the above point 4 for fixing and make sure the cable pass through the cut cable entry hole.



Attention:

Normally, the frequency of the microwave signal is 5.8GHz. When there're some microwave signals with the same frequency, like WIFI or other signals that close to the frequency 5.8GHz, it will interfere the function of microwave products. Some malfunctions may be caused if the production is interfered, such as the lamp keep on lighting, the detection distance get shorter, or the detection function is disordered. The metal can shield microwave signals. When the sensor is shielded by metal, it will not work or the detection distance will be very short.

3.2-2 Daylight Sensor: The daylight threshold can be set on DIP switches.

	3	4	
●:ON	●	●	Disable
○:OFF	○	○	50Lux
	●	○	10Lux
	○	○	2Lux

3.2-4 Detection Area: Detection area can be reduced by selecting the combination on the DIP switches to fit precisely for each specific application.

	7	8	
●:ON	●	●	100%
○:OFF	○	○	75%
	●	○	50%
	○	○	10%

Remark: the default is 25% brightness in the stand-by period.

R LUM Installation Instruction



Article	Power [W]	Luminous flux [lm] *	Efficacy [lm/W]	Body type	Weight [Kg]	Additional options
R.10.4000.220	10	1290	129	220 x 220 mm	0.50	Motion sensor [MS], Light color temperature control switch, DALI
R.18.4000.280	18	2322	129	280 x 280 mm	0.75	
R.24.4000.330	24	3096	129	330 x 330 mm	0.93	
R.36.4000.400	36	4640	129	400 x 400 mm	1.05	

Microwave technical data

Operating temperature	Installation height	Warm-up time	HF Microwave Frequency	8PIN switch setting	HF Microwave power
-20°C~+40°C	Ceiling mounting: $\leq 6\text{m}$ Wall mounting: 0.8-2.5	15S	5.8GHz \pm 75MHz	A. Detection Area B. Hold Time C. Daylight Sensor D. Stand-by Period	<0.2mW

Very important information

Please read carefully before installation. If any of the following occurs please turn off the power and contact the local retailer.

- Smoke.
- Peculiar smell or noise.
- Damage to the lamp body or anything rattling if the lamp has been dropped.

Please install and operate in strict accordance with these instructions and do not modify or change any of the components.

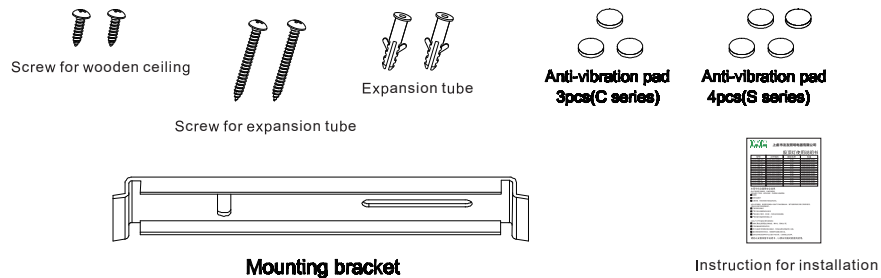
- Turn power off before installation.
- Do not exceed the rated voltage.
- Do not install on an unstable surface.
- Do not install on or above a surface subject to high temperatures.

Please pay attention to the following points when installing

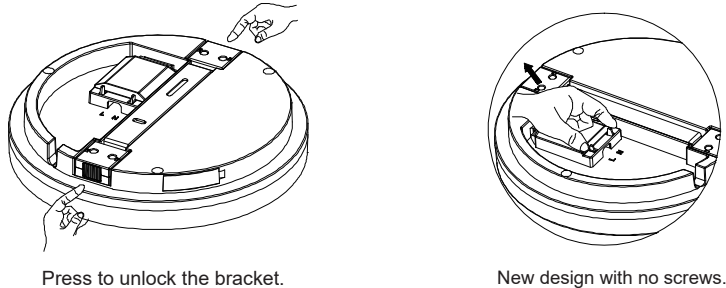
- The light should not be near any corrosive, explosive or flammable materials.
- The lamp should avoid any strenuous vibration or striking.
- We recommend that this lamp should be installed by a qualified electrician.
- Please ensure the L, N and make sure the cable connections comply with national regulations.
- Please make sure that the lampshade is clear & clean to allow maximum lumen output.

Please keep this instruction for further use

INSTALL ACCESSORIES LIST



KEY POINT FOR INSTALLATION



--- INSTALLATION STEP

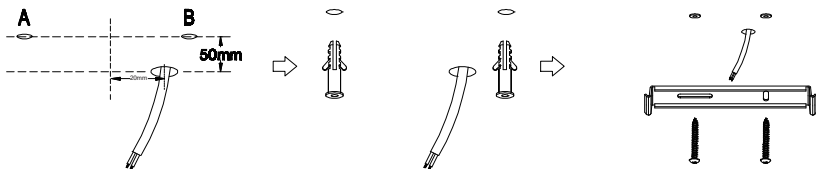
1. Fix the mounting bracket

1.1. Fix the mounting bracket---

For cement ceiling-see the cable outlet as the central point, shift 50mm and drill two $\phi 5$ mm holes A and B, Knock 2 white expansion tubes provided into the holes

1.2. Turn 2 pcs of $\phi 4$ mm \times 30mm screws into the white expansion tubes through the bracket hole to fix the bracket on the ceiling.

1.3. For wooden or other non-cement ceiling- use 2 pcs of $\phi 4$ mm \times 15mm screws directly to mount the bracket on the ceiling.



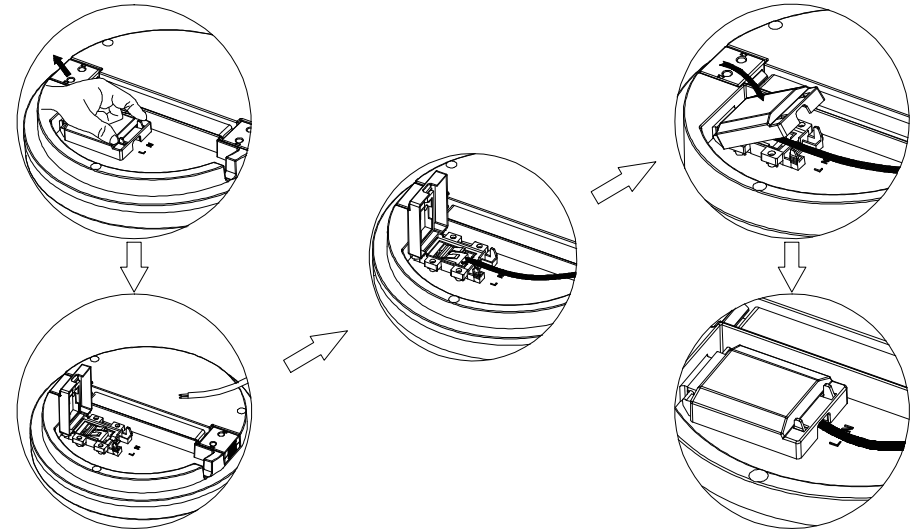
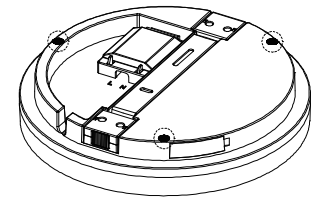
2. Wiring the lamp

2.1 Stick the black EVA anti-vibration pad onto the back surface of the lamp, details please see picture in right.

2.2 Open the waterproof terminal box.

2.3 Peeled cable's plastic insulation off 20mm, two single wires (L, N) 8 mm separately. Connect the wire to the L and N poles of the fast terminal.

2.4 After connecting the cable as required, press the waterproof cover well.



3. DCCT function

Open the side window, adjust the color temperature as you need (As shown). Close the window after adjustment. Pay attention: Please note it is important that the window should be flat to meet the waterproof(IP) rating.

